

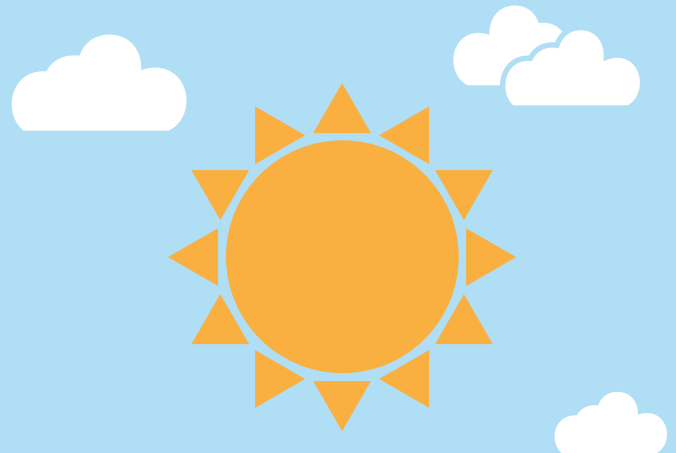
Two types of peritoneal dialysis

Peritoneal dialysis can give you more control and flexibility in your kidney care. It can be done at home and when you travel. It requires a catheter inserted into your abdomen so that a fluid called dialysate can be filled and drained to remove wastes and fluid from your blood. This is called a fluid exchange.

There are two types of fluid exchanges:

Continuous ambulatory peritoneal dialysis (CAPD)

- Done while you are awake.
- Fill and drain the dialysate by hand.
- Usually 4 fluid exchanges each day.
- Takes about 30–40 minutes each time.
- Can be done almost anywhere.



Automated peritoneal dialysis

- Done at night while you are asleep.
- Utilizes a machine called a cycler.
- Does 3–5 fluid exchanges at night over an 8–10 hour period.
- Cycler is portable so you can also use it when traveling.